

# Free-Standing Headquarters Facility

501 Airpark Drive, Fullerton, CA



## Highlights

- Free-standing 45,536-square-foot headquarters facility
- Image 7,738 square feet of office area
- Central Southern California location with immediate access to the 5, 57 and 91 Freeways
- \$750,000 major renovation completed in 2007
- Pro-business environment and ample retail amenities
- Corporate neighbors include Iron Mountain, Cargill, VanLaw Foods and Sasco Electric

2211 Michelson Drive, Suite 450  
Irvine, California 92612

T 949.296.3600  
F 949.296.3699

[360CommercialRE.com](http://360CommercialRE.com)

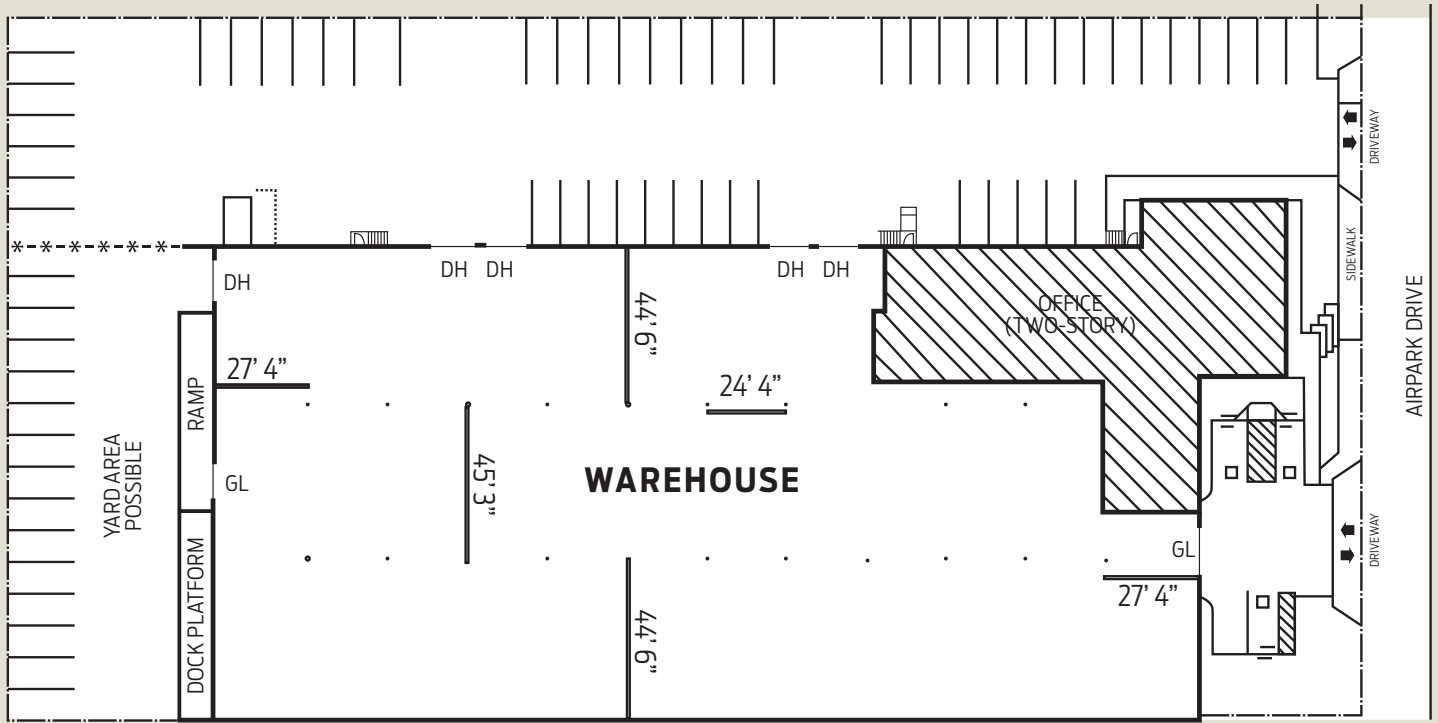




# Free-Standing Headquarters Facility

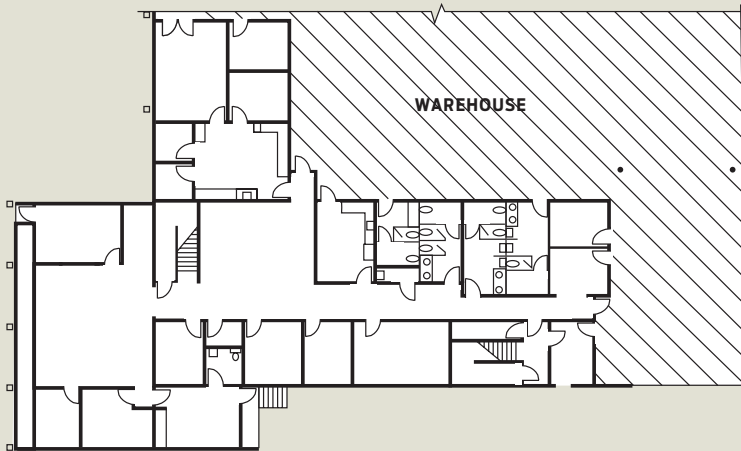
501 Airpark Drive, Fullerton, CA

## SITE PLAN

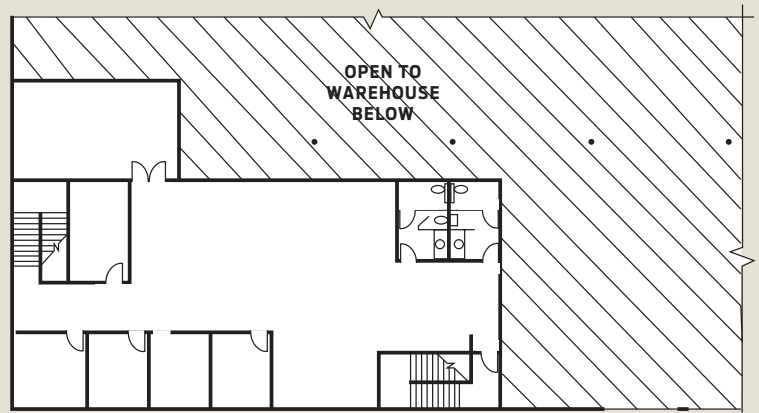


## FLOOR PLANS

### First Floor



### Second Floor



2211 Michelson Drive, Suite 450  
Irvine, California 92612

T 949.296.3600  
F 949.296.3699

[360CommercialRE.com](http://360CommercialRE.com)



©2010 360 Commercial Partners<sup>SM</sup>. All rights reserved. All properties are offered for lease or sale through 360 Commercial Partners, a licensed real estate broker. The information in these materials has been obtained from various sources. While we believe the information to be reliable, 360 Commercial Partners does not make any representation or warranty as to the accuracy or completeness of such data and it should be independently verified by prospective tenants.

